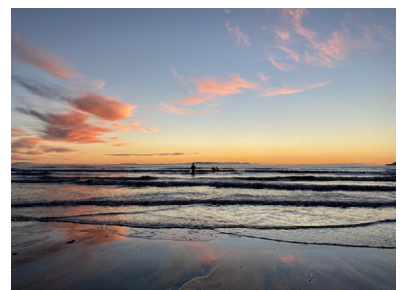
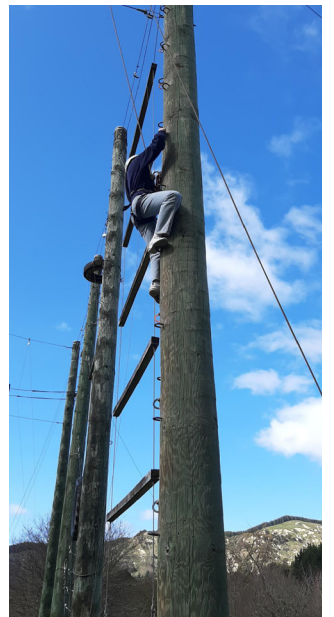


Study in Hawke's Bay, New Zealand

Schools for International Students

Hawke's Bay is one of New Zealand's most beautiful regions, located on the sunny east coast of the North Island. Known for its Mediterranean climate, stunning coastline, and friendly communities, it's a fantastic place to experience Kiwi life while studying abroad. With long, warm summers and mild winters, Hawke's Bay offers plenty of opportunities to enjoy the outdoors all year round.





Why Choose Hawke's Bay?

Hawke's Bay has two main cities – Hastings and Napier.

Napier is famous for its unique Art Deco architecture, vibrant café culture, and beautiful seaside location.

The city has a relaxed and welcoming atmosphere, making it easy for international students to settle in and feel at home.

The waterfront Marine Parade, lined with gardens, cycle paths, and attractions, is a favourite spot for both locals and visitors.

Hastings is just a short drive from Napier and Havelock North, making it part of a lively and connected community.

Hastings is well known for its warm climate and fertile land, which means it's surrounded by orchards, vineyards, and farms.

The city is sometimes called the "fruit bowl of New Zealand," and during summer and autumn you'll find fresh produce everywhere, as well as busy local markets.

Havelock North sits just a few minutes from the larger cities of Hastings and Napier, and is surrounded by rolling hills, vineyards, orchards, and beautiful countryside.

The town itself is known for being safe, welcoming, and student-friendly, with plenty of cafes, restaurants, and shops to explore. Havelock North is also famous for its natural beauty.

Central Hawke's Bay (CHB) is the southern part of the Hawke's Bay region on New Zealand's North Island.

It's made up of smaller towns like Waipukurau and Waipawa, along with many rural communities surrounded by farmland, rivers, and rolling hills.

Life in Central Hawke's Bay is quieter and more relaxed compared to larger centres like Hastings or Napier. It has a strong sense of community, where people know each other and are welcoming to newcomers.

For students, this means a supportive environment, smaller class sizes, and lots of opportunities to get involved in local activities.

There's always something to do!

Hawke's Bay offers a lifestyle full of variety and adventure, whether you enjoy the outdoors, sports, culture, or simply relaxing with friends.

- **Outdoors & Adventure:** Climb Te Mata Peak for stunning views, cycle the Hawke's Bay Trails, or spend time at beautiful beaches like Waimarama and Ocean Beach.
- **Sports & Recreation:** Schools and clubs offer rugby, football, netball, hockey, cricket, and more – a great way to get active and meet new friends.
- **Arts & Culture:** Explore the Art Deco Festival, local museums, galleries, and live performances throughout the year.
- **Food & Lifestyle:** Known as New Zealand's food and wine capital, the region is full of farmers' markets, orchards, and fresh produce.
- **Māori Culture:** Hawke's Bay has a proud Māori heritage that's part of everyday life. From pōwhiri (welcoming ceremonies) to kapa haka performances and local iwi traditions, you'll have the chance to experience the culture and values of Ngāti Kahungunu, the tangata whenua (people of the land).

Schools in Hawke's Bay

Hawke's Bay schools are well-regarded for their strong academic programmes and wide range of opportunities outside the classroom.

- **Quality Education:** International students can choose from schools in Napier, Hastings, Havelock North, and Central Hawke's Bay, all offering excellent teaching and support.
- **Student Support:** Every school featured in this brochure has dedicated staff to help international students feel comfortable, included, and confident in their studies.
- **Opportunities Beyond the Classroom:** From sports teams and arts programmes to outdoor education and cultural activities like kapa haka, you'll gain experiences that make your time in New Zealand truly memorable.

Choosing Hawke's Bay means gaining not only a world-class education but also the chance to be part of a safe, welcoming community in one of the most beautiful regions of New Zealand.



Central Hawke's Bay College

Type	State Secondary School
Age	Year 9-13 (13-19 year olds)
Total Roll	544 Students
International student roll	10 international students
Length of programme offered	Up to 12 months
Accommodation	Homestay
Uniform	Uniform from Year 9-13

- www.facebook.com/CHBCschool
- www.instagram.com/chb_college
- www.chbc.school.nz

School brochure:



Contact Details:

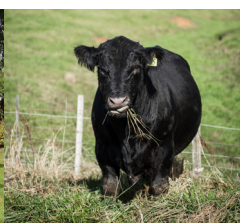
Kim Walker
International & Homestay Co-Ordinator
P: +64 6 858 9203
E: kimw@chbc.school.nz

Central Hawke's Bay College is located in the township of Waipukurau in the beautiful Hawke's Bay region of New Zealand.

Central Hawkes Bay College has a proud tradition of providing quality education for over 50 years. We are forward thinking and meet the needs of all students with a diverse range of educational, sporting and cultural opportunities.

Central Hawke's Bay College is a co-educational 500 student school based in Waipukurau. The surrounding district is a rural area with a wide variety of sheep, beef, deer, arable and dairy farming, horticulture and viticulture encompassed by the scenic Ruahine mountain range to the west and a plentiful array of East Coast beaches. If you enjoy outdoor adventures and a rural lifestyle with friendly people then Central Hawke's Bay College is the place to be! The closest largest cities are, to the North Hastings and Napier and to the South Palmerston North.

The College is only an hour's drive to Hawke's Bay Airport. Hawkes Bay Airport is an easy one hour flight from Auckland, flights to and from Auckland are regular and serviced by Air New Zealand. Auckland's International Terminal is a short 10 min walk to the domestic terminal making Central Hawke's Bay College easily accessible when you touch down in Auckland to start your real "Kiwi experience".





Hastings Boys' High School

Type	State Secondary School
Age	Year 9-13 (13-19 year olds)
Total Roll	800 Students
International student roll	5-20 international students
Length of programme offered	1 week up to yearly
Accommodation	Homestay
Uniform	Uniform from Year 9-13

- www.facebook.com/hastingsboyshighschool
- www.instagram.com/hastingsboyshighschoolnz
- www.hastingsboys.school.nz

School brochure:



Contact Details:

Mr Jason Bird, Deputy Principal
E: jasonb@hastingsboys.school.nz

Mrs Lyn Malaugh, International Liaison
E: lynm@hastingsboys.school.nz

Hastings Boys' High School is a traditional school known for its emphasis on discipline, respect and tolerance of others.

Established at the beginning of the last century, we have a long teaching legacy within the Hawke's Bay. While preserving the timeless character of the original buildings, we maintain first-class facilities including specialist rooms equipped with all the tools to prepare students for a successful future.

Our academic approach can be attributed to outstanding teaching and an understanding of how boys learn. Every student is seen as unique, with their own specific needs and aspirations.

Our experienced international staff and English Language learning teachers are committed to the care and well-being of our international students. We are the only school in Hawke's Bay to offer the prestigious Cambridge IGCSE curriculum.





Hastings Girls' High School

Ngā Rau Huia o Ākina



Hastings Girls' High School

Type	Girls' State Secondary School
Age	Year 9-13 (13-19 year olds)
Total Roll	615 Students
International student roll	11 international students
Length of programme offered	Short and long term stays, customised on request
Accommodation	Homestay
Uniform	Uniform from Year 9-13

- www.facebook.com/HastingsGirls
- www.instagram.com/hastingsgirlshighschool
- www.hastingsgirls.com
- www.hastingsgirls.com/international-students

Virtual Tour:



Contact Details:

Jen Fugle
Director of International Students
E: international@hastingsgirls.com
P: +64 6 873 1133 or +64 27 3515223

At Hastings Girls' High School, we warmly welcome international students into our vibrant, inclusive, and globally connected learning environment.

Located in the heart of beautiful Hawke's Bay, we offer a truly New Zealand experience where young women are inspired to lead, achieve, and make a meaningful impact in the world.

With students from over 23 different cultures, our school is a place where diversity is celebrated. International students are an important part of our school family and help enrich our global perspective. You won't just attend school here—you'll belong.

What sets us apart is our strong connection with our indigenous people both in New Zealand and the Pacific. These partnerships give all students—especially those from overseas—a unique opportunity to experience and understand New Zealand's cultural heritage in a meaningful way.

Our experienced and diverse teaching staff are committed to student success and wellbeing. Many of our team are bilingual, and we provide a strong support network to help international students feel confident, connected, and cared for from day one.

Choosing Hastings Girls' High School means choosing a school that values cultural connection, academic excellence, and global citizenship. Join us and experience the best of education and life in New Zealand.





**HAVELOCK NORTH
HIGH SCHOOL**



Havelock North High School

Type	Co-Educational Secondary School
Age	Year 9-13 (13-19 year olds)
Total Roll	1,130 Students
International student roll	25 international students
Length of programme offered	1 term to 5 years
Accommodation	Homestay
Uniform	Uniform from Year 9-13

www.facebook.com/HNHSOfficialPage

www.hnhs.school.nz

Video:



Contact Details:

Jamie Kitchin
Director of International Students
E: ktc@hnhs.school.nz
P: +64 27 768 7953

Havelock North High School, located in the heart of Hawke's Bay, New Zealand, is recognised for its strong culture of high standards and expectations. The school consistently achieves above national averages in NCEA qualifications, with a focus on helping every student realise their full potential. A broad and flexible curriculum allows learners to pursue traditional academic pathways through to Year 13, supported by modern digital tools and close partnerships between students, teachers, and families.

Beyond the classroom, HNHS offers a vibrant extracurricular programme that includes sport, music, drama, and cultural activities. The school is home to the National Youth Drama School, has award-winning choirs, and offers over 30 different sports from rugby and hockey to equestrian and adventure racing. These opportunities build teamwork, leadership, creativity, and confidence, ensuring students develop both academically and personally.




HNHS also places great importance on belonging and cultural identity. Students are welcomed into the school with a pōwhiri and supported through a strong house system and pastoral care network. With opportunities to engage in Māori cultural activities, leadership programmes, and community service, international students will find HNHS a welcoming environment where they can excel, connect, and thrive in every aspect of school life.



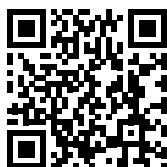


Iona College

Type	State-integrated boarding and dayschool for girls
Age	Year 7-13 (11-19 year olds)
Total Roll	330 students
International student roll	7 international students
Length of programme offered	Long term students
Accommodation	Boarding house
Uniform	Uniform from Year 7-13

 www.iona.school.nz
 www.facebook.com/IonaCollegeNZ
 www.instagram.com/ionacollegenz

School brochure:



Contact Details:

P: +64 6 877 8149
 E: office@iona.school.nz

Become an Iona International Student: We welcome girls from all over the world into our Iona family. Working alongside New Zealand students in the classroom, our international students forge strong connections and relationships.

Class sizes are small to ensure students are engaged in their learning, and specialised tuition in English is provided as required.

Why choose Iona? Iona College was founded in 1914 and has a rich history. The school is situated in 27 acres of park-like grounds. There are extensive playing fields, netball and tennis courts, a fitness studio as well as a sports centre and swimming pool. We have purpose built facilities for art, photography, design, technology and music.

The award-winning Information Resource Centre and The Blyth Performing Arts Centre are magnificent spaces to learn in and perform in, designed to enhance our girls' educational environment.

Academic Success: We are incredibly proud to be recognised as one of the leading secondary schools in NZ education and our results reflect the importance we place on academic excellence.

Beyond the Classroom: Iona's extensive range of experiences in sports, culture and the arts, encourage leadership, teamwork and personal growth. Our girls are able to explore new opportunities and confidently express themselves as individuals. We have a vibrant programme of outdoor learning opportunities that build our girls' appreciation for both the natural world and environment, and – importantly – for themselves.





Lindisfarne College

Type	State-integrated boarding and dayschool for boys
Age	Year 7-13 (11-19 year olds)
Total Roll	560 students
International student roll	25 international students
Length of programme offered	Long term students
Accommodation	Boarding house
Uniform	Uniform from Year 7-13

- www.lindisfarne.school.nz
- www.facebook.com/lindisfarnecollege.nz

School brochure:



Contact Details:

Gaenor Clarke
 Director of International Students
 E: international@lindisfarne.school.nz
 P: +64 21 203 2830

Lindisfarne College is a state-integrated boarding and day school for boys situated on 22 hectares of park-like grounds. At the heart of our College is our Special Character which inspires our students to demonstrate our core values of courage, respect, integrity, kindness, humility and service into their everyday attitudes and behaviours. We warmly welcome international students who enrich our school community with diverse cultures, perspectives and values. We offer a comprehensive and encompassing education, placing importance on the development of all-round “good men” who display the core values of the College.

We consistently rank in the top five of all boys’ schools in New Zealand for academic success. Small class sizes, a dedicated ESOL teacher and a supportive environment tailored to boys’ learning and development ensures success for our international students.

Our extensive sports programme and first-class facilities develop skills, confidence and character. We also offer a rich music and arts programme giving our students endless opportunities to perform and create.

Lindisfarne College offers a safe, supportive, inclusive boarding community where our international students feel at home. Our on-site hostels offer shared and private spaces where boarders develop lifelong friendships.

International students are supported by a highly experienced pastoral team including qualified nurses available 24 hours a day in a well-resourced medical centre. A dedicated international team support our international students in all aspects of their Lindisfarne journey including regular support meetings and organising homestays with local families during term breaks.





NAPIER GIRLS'
HIGH SCHOOL



Napier Girls' High School

Type	State Secondary School
Age	Year 9-13 (13-19 year olds)
Total Roll	1,000 students
International student roll	30 international students
Length of programme offered	1 term (10 weeks) up to 5 years
Accommodation	Homestay
Uniform	Uniform from Year 9-13

- www.nghs.school.nz
- www.facebook.com/nghsinternational
- www.instagram.com/nghsinternational

School brochure:



Contact Details:

Jo Stickley, Manager of International Students
Napier Girls' High School
E: international@nghs.school.nz
P: +64 6 835 1069 extn: 208

Studying at Napier Girls' High School as an international student offers a unique blend of academic excellence, cultural diversity, and stunning natural environments.

Recognised as one of the best schools in provincial New Zealand, we offer a value-based education with a choice of accommodation; homestay to immerse oneself into kiwi culture or boarding facility that connects us to rural New Zealand. We offer extensive top-tier sports teams and a dynamic performing arts department. Experience the richness of authentic Maori culture in our daily school life. Situated in the stunning Hawke's Bay region, our school provides a beautiful setting for learning and discovery.

Napier Girls' High School is a vibrant teaching and learning community where a successful education pathway is created for every student to enable them to reach their highest potential to become confident, innovative and successful in life.

The Napier Girls' High School International team assists all international students to:

- Reach their academic goals
- Improve their English language skills
- Discover New Zealand culture, including Te Ao Maori (the Maori world), through an enjoyable programme of trips and experiences beyond the classroom
- Become fully involved in school life, including cultural and sporting extracurricular activities
- Experience safe, caring and comfortable environments in homestay and hostel accommodation
- Form lifelong friendships and links with New Zealand





Sacred Heart College Napier

Type	State-Integrated Secondary School
Age	Year 9-13 (13-19 year olds)
Total Roll	338 students
International student roll	5-10 international students
Length of programme offered	From 6 weeks up to 5 years
Accommodation	Homestay
Uniform	Uniform from Year 9-13

- www.sacredheartnapier.school.nz
- www.facebook.com/sacredheartnapier
- www.instagram.com/sacredheartcollegenapier

School brochure:



Contact Details:

Lea Carstens
SHC International Director
P: +64 27 660 0053
E: international@shcn.school.nz

Sacred Heart College is a leading school for girls with a strong focus on academic excellence. It offers a values-based education. Each year, we welcome international students and in this safe and nurturing environment they soon make friendships, improve their English language skills and embrace the Kiwi lifestyle. International students enrich our school community and we value the students, and the cultural diversity they bring.

Our beautiful hilltop school with stunning views of the sea provides the perfect environment for study. Learning is embedded in strong relationships and high expectations. Small class sizes (15 - 19 approx.) allow for high levels of support and teacher interaction. SHC is a state-integrated Catholic school for girls from Year 9 to 13 and we follow the proud tradition of Catholic values and teachings. The small class sizes and nurturing environment provide all girls with opportunities to obtain the highest personal standards of achievement.

Welcoming you as part of the family is one of our expectations for a suitable homestay. We carefully choose our homestay families and give consideration to student interests and preferences. They will introduce you to the Kiwi lifestyle and be there for you if you need help.

Throughout the year, our international students go on trips around the region to see more of our beautiful country and meet and socialise with other students.

SHC offers a wide range of extra-curricular activities like sports, music, drama and cultural events. Participating in these creates opportunities for you to make friends and have fun.





St John's College

Type	State-integrated Catholic boys' secondary school
Age	Year 9-13 (13-19 year olds)
Total Roll	420 students
International student roll	8 international students
Length of programme offered	A few weeks – one term – full year – five years
Accommodation	Homestay
Uniform	Uniform from Year 9-13

- www.stjohns.school.nz
- www.facebook.com/stjohns.school.nz
- www.instagram.com/stjohns.school.nz

School brochure:



Contact Details:

E: international@stjohns.school.nz

Founded in 1941 and with a current roll of just over 420 young men, our aim is to provide a high-quality education, grounded in values within our Catholic and Marist traditions. St John's College has a strong focus on excellence in academia, sports, technology and the arts, supported by a totally dedicated, highly-qualified teaching and administrative staff where international students will feel at home, learn, thrive and grow.

Designed to welcome both short- and long-term international students, St John's provides a well-resourced support structure including a School Nurse, Careers Adviser, Counsellor and Chaplaincy ensuring students feel welcomed and supported.

International students are fully integrated into mainstream classes, with additional ESOL support as needed. Orientation and pastoral care are carefully structured to help them settle quickly.

We have excellent homestays that will welcome you into their homes, who enjoy hosting overseas students in a safe, family environment. They allow our international students truly to embrace the Kiwi lifestyle.

With its combination of academic rigour, individualised support and vibrant community life, St John's College delivers an enriching and well-rounded experience for international students seeking a quality education, a student 'brotherhood' and caring homestays.





TE KURA TUARUA O
TAMATEA



Tamatea High School

Type	Co-educational state secondary school
Age	Year 9-13 (13-19 year olds)
Total Roll	402 students
International student roll	10 international students
Length of programme offered	Short-term (one term), long-term and full term (one year)
Accommodation	Homestay
Uniform	Uniform from Year 9-13 (short-term students can wear their own)

- www.tamatea.school.nz
- www.facebook.com/profile.php?id=100057047936059
- www.instagram.com/tamatea_high
- www.instagram.com/tamatea_international

School prospectus:



Contact Details:

P: +64 6 844 6600

E: international@tamatea.school.nz

Located in the coastal city of Napier, Tamatea High School offers international students a supportive and inclusive learning environment that encourages personal growth and cultural understanding. With small class sizes of 20–25 students, we ensure every learner receives personalised attention and meaningful support.

Our school embraces a rich cultural heritage, with more than half of our students identifying as Māori. Te reo Māori, tikanga Māori, and local histories are thoughtfully woven into the curriculum, creating a learning experience that honours Aotearoa's diverse perspectives and stories.

Beyond the classroom, students can enjoy a wide range of extracurricular activities, including badminton, volleyball, basketball, rugby, Waka Ama, Kapa Haka, and Rockquest.

International students are welcomed into caring Kiwi homestay families, offering a safe and authentic New Zealand living experience. Upon arrival, students take part in an orientation programme, including guided tours and introductions to key staff, and are paired with a local buddy to help them settle into school life and make meaningful connections.

To support academic success and language development, we offer a daily ESOL (English for Speakers of Other Languages) programme, tailored to individual needs. Our teachers work closely with international students to build language confidence, enabling full engagement in the classroom and everyday conversations.

At Tamatea High School, we closely monitor each student's academic progress and well-being. Through dedicated staff, regular check-ins, and personalised support plans, we empower students to thrive—both in their studies and in their personal growth.





Taradale High School

Type	State Secondary School
Age	Year 9-13 (13-19 year olds)
Total Roll	1,025 students
International student roll	20-30 international students
Length of programme offered	1 term (10 weeks) up to 5 years
Accommodation	Homestay
Uniform	Uniform in Year 9-12 Different uniform in Year 13

- www.ths.school.nz
- www.facebook.com/TaradaleHighSchool
- www.facebook.com/TaradaleHighSchoolInternational
- www.instagram.com/taradale_high
- www.instagram.com/taradale_high_international

School brochure:



Contact Details:

Alicia Dearing, International Director
E: international@ths.school.nz | P: +64 6 844 2159 extn: 730

Located in the suburb of Taradale, the High School is a five minute walk to a convenient shopping centre, and new sports arena with modern gymnasiums and sports facilities.

Taradale has been welcoming international students for more than 30 years. The school is equipped with a gym, drama and music studios, dance room, computer room, a technology centre and extensive sports ground. It is also equipped with hospitality facilities and more recently a modern art studio and a purpose-built Science block.

Taradale High School values its international students and the contribution that they make to the culture of our school. We do our best to ensure the experience of each student is both memorable and academically rewarding. We have dedicated international support staff that are available 24/7 to ensure students are supported.

Taradale also runs an Outdoor Education program for its international students, which includes fortnightly activities and at least one regional overnight trip away every term. Activities include but are not limited to surfing, sailing, canyoning, white water rafting, farm trips and local sightseeing opportunities.

Taradale also hosts a diverse range of subjects, the school offers Arts, Graphic Design, Photography, Biology, Calculus, Chemistry, Visual Design and Communication, Drama, Economics, Geography, History, Hospitality, Information Technology, Māori Culture, Physical Education, Physics, Social Studies, Statistics and Technology. Our homestay families are handpicked to match the interests of the students wherever possible. Most homestays are in walking distance to the school. They are waiting to welcome you into their home.





William
Colenso
College



William Colenso College

Type	Co-educational Secondary School
Age	Year 7-13 (12-18 year olds)
Total Roll	400 students
International student roll	20 international students
Length of programme offered	2 weeks to 5 years
Accommodation	Homestay
Uniform	Uniform from Year 7-12

- 🌐 colenso.school.nz/international
- 📘 www.facebook.com/profile.php?id=61554121062394
- 📷 www.instagram.com/colensointernationals

School brochure:



Contact Details:

Laura Jackson
E: laura.jackson@colenso.school.nz

Laugh Experience our unique outdoor education programme and have fun as you learn.

Learn Study in a friendly, culturally diverse and welcoming environment.

Live In sunny Napier, an attractive city close to the sea.

Love Making lifelong friends with our friendly staff, students and community.

Green Join our Green Initiative to help offset flights by donating to our local arboretum.

The great climate, beautiful beaches, mountains and rivers in our area are an adventure-seekers' paradise. A fabulous classroom for all students to experience our awesome outdoor education programme and have fun as you learn. You can participate in a range of outdoor activities such as kayaking, rock-climbing, caving, surfing, tramping and mountain biking.

Reach your academic potential via the New Zealand Curriculum in our friendly, culturally diverse and welcoming environment. Māori culture is an intrinsic part of our school's activities. You will be welcomed with a pōwhiri (traditional Māori welcome) and you can learn Te Reo Māori (Māori language). Visual and performing arts are also a strong part of the culture of the school.

Make friends with the local New Zealand students as well as other international students from all around the world. Our Homestay Coordinator carefully matches you with a homestay family so you will have common interests and shared expectations and experiences. Most homestay families are within walking or biking distance to school.





Woodford House

Type	State-Integrated boarding and day school for girls
Age	Year 7-13 (11-19 year olds)
Total Roll	380 students
International student roll	35 international students
Length of programme offered	Long-term students
Accommodation	Boarding house and homestay options
Uniform	Year 7-13

- www.woodford.school.nz
- www.facebook.com/woodfordhouseschool
- www.instagram.com/woodfordhouseschool

Website:



Contact Details:

Robbie Pickford
Director of Global Education
international@woodford.school.nz



Woodford House is the largest girls' boarding school in New Zealand, offering a unique environment where students are supported to reach their full potential. Established in 1894, Woodford House blends a proud heritage with innovative teaching and a future-focused curriculum, providing an inspiring education for young women.

International students are welcomed into a vibrant and inclusive community where cultural diversity is celebrated and lifelong friendships are formed. Our academic programme is designed to ignite a love of learning, with small class sizes, personalised pathways and outstanding teachers ensuring each girl is guided to achieve her best.

Boarding life at Woodford House offers a true "home away from home." With exceptional pastoral care, dedicated staff and modern facilities, international students are fully immersed in school life. Weekend activities range from beach outings and city visits to creative workshops, while holidays are supported through boarding programmes or carefully selected homestay families.

Competing: Sport plays an invaluable role in enhancing wellbeing, resilience, and life skills. With over 27 sporting codes, girls can pursue competitive teams, social sport, or wellbeing activities, fostering a lifelong love of being active.

Performing: Our cultural cornerstone is thriving. From *Showquest* - New Zealand's largest school performing arts competition - to choir and interschool productions, students are encouraged to take risks, build confidence and discover their creativity.

Outdoor Education: Annual outdoor programmes challenge and inspire, from high ropes and kayaking to hiking the Tongariro Crossing, helping girls grow in teamwork and confidence.

Students not sitting examinations will have the opportunity to participate in an exciting end-of-year programme.

With outstanding academics, world-class care and endless opportunities, Woodford House offers international students an education and experience to last a lifetime.



Learning Hawke's Bay is a membership association of education providers in the Hawke's Bay region. We have about 20 members, including schools and tertiary providers.

Our mission is to connect and support international education providers in the Hawke's Bay region to develop international education opportunities and programmes, and to promote global citizenship.

We do this by promoting Hawke's Bay as a desirable international education destination, and running programmes that help enhance international student experience in the Bay.

We are supported by Hastings District Council and Napier City Council. We also seek funding from other sources (eg central government agencies, private businesses, etc.) and work closely with them to develop international education.

Our primary activities include:

- Supporting members to develop marketing materials, such as an international student prospectus, flyers and video clips
- Promoting our members and Hawke's Bay via mainstream and social media, eg print and online media, WeChat (China market) and Facebook
- Organising and leading offshore marketing missions, participated by our members
- Bringing education agents to our region and introducing them to our member schools/institutions
- Coordinating international student visits to our region
- Running programmes that improve international student experience in the Bay, such as mayoral welcome functions, information seminars and student ambassador programmes
- Identifying other opportunities to support our members to develop international education.

Contact:

Riaz Kaizar Unwala
Learning Hawke's Bay, Regional Manager
P: +64 21 199 6872 | www.learninghawkesbay.nz

